



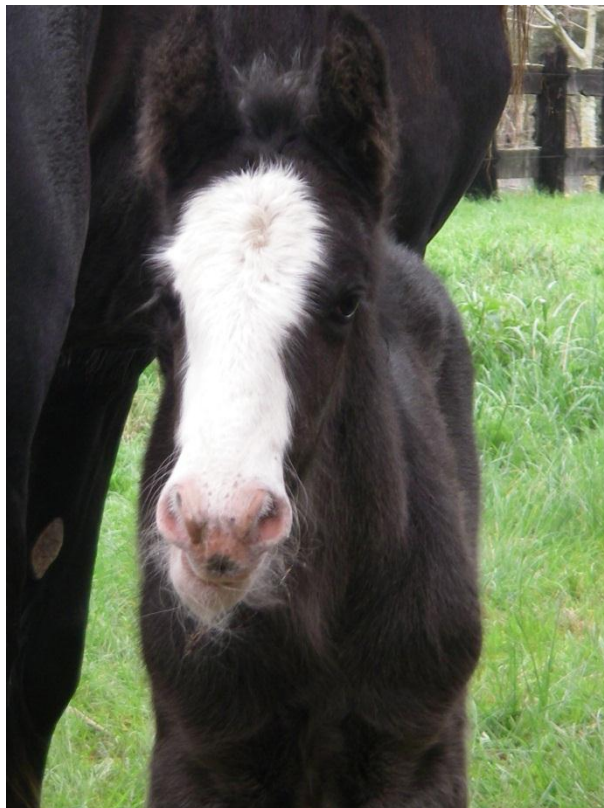
SHIRE HORSE SOCIETY AUSTRALIA

INCORPORATED

Forging the future of the Shire Horse in Australia

DECEMBER 2010

OFFICIAL NEWSLETTER



Sugarloaf Maximillian

Photo courtesy of Chris and Cindy Perdis

PATRON:

Mr Rob Vickery

Council Member, Royal Agricultural Society NSW

www.shirehorsesociety.com.au

Helene and Greg Scarf again invite all SHSA members to the

Shire Horse Seminar and Social Weekend

Saturday 9th & Sunday 9th January 2011

9.30am Start

Venue; The Cedars, Kangaroo Valley

Program:

Saturday:

Equine dentistry – Leith Ryan (TBC)

Master Equine Dentist and inventor

Of the Hippus bit – ‘for the horse’

See www.hippus.ch for more information

Breeding strategy – Ross Carbery

How to breed the horse you want

Australian show harness – Tim Peel

Harness and the Australian show scene –
penetrating the mysteries of exhibiting in
Trade Harness

Sunday:

Shire Horse Society Australia AGM

9.30am

**Fully catered, with gourmet breakfasts, lunch and
dinner**

ACCOMMODATION – Camping facilities available for tents, swags and
trucks/floats. Bathroom & kitchen facilities provided.

BOOKINGS ESSENTIAL as the event is **FULLY CATERED**

Contact Ineke by **Monday 3rd January** to reserve your place

ine_kuiper@hotmail.com or 0408 669 638

Cost: \$35pp

Kids under 15 free

*nb: You must be a member to attend – joining available on the day - \$15
Cash or cheque only on the day*

**\$35
head**

**FULLY
CATERED**

SHSA NEWS...

SHSA Stud Book goes online in 2011

— We are very excited to announce that the Shire Horse Society Australia Stud Book will be on-line from early 2011.

Members will be able to access the Stud Book via our website with their own unique login details that will be issued after we receive membership payment.

Not only will you be able to access all Shires registered in the Australian Stud Book, but also many Shires that are registered in the UK, US and Canada that are linked to the pedigrees of Australian registered horses.

The Stud Book will be searchable by a range of criteria, including horse name, owner's name, stud name and progeny lists, right down to parts of names. A limited pedigree (3 generations) will be able to be viewed on-screen or you can also view the extended pedigree, which sometimes goes back as far as the 1930s. Both are printable as well.

This is a great development and we hope that you find it as useful as we think it is!

Membership for 2011 — in light of our increased member services the SHSA will be increasing our membership fees for the coming year to \$15 to help cover these costs.

New import Brownroyd Dark Shadow

- Congratulations to Marty Hayward of Rockhampton, who has recently imported Shadow from the UK. Shadow is a black stallion that was owned and shown by Bill and Sarah Bedford. He stood third (to two other Bedford owned stallions) in a very strong class of mature stallions at the 2010

National Shire Horse Show in Peterborough UK.

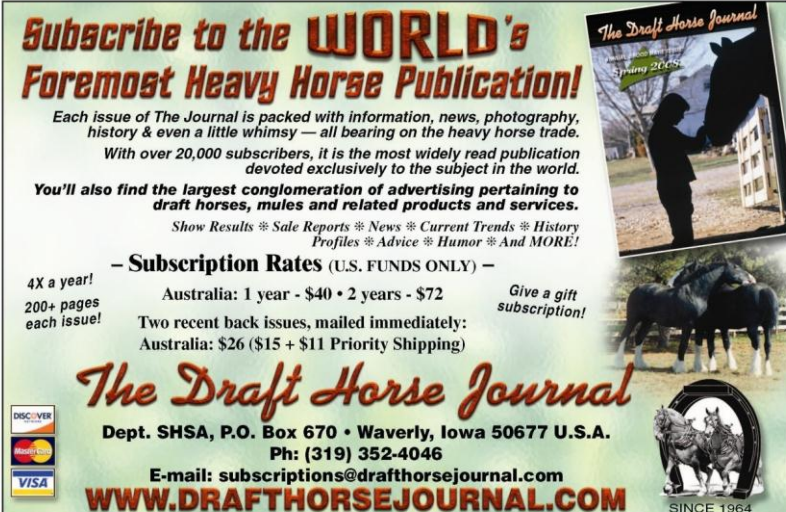
It is very exciting to have such a quality horse brought in to Australia, and we wish Marty all the best breeding with his two imported Shire mares.

Sydney Royal Easter Show judge announced — we are pleased to say that SHSA nominated judge, Bryan Morgan, will be judging the Shires at Sydney Royal 2011.

Bryan is a highly experienced Shire Horse judge and breeder (Bettws Shires) from Wales. He was first appointed to the SHS judges panel in 1997 and has judged numerous shows since then, including the National Shire Horse Show at Peterborough.

We are very excited that Bryan has accepted this appointment (travelling at his own expense), and we hope that he and his wife Barbara have a wonderful trip to Australia!

SHS delegate attending seminar — David Ralley-Davies, Secretary of the Shire Horse Society, has confirmed that he and his wife will be attending our seminar in January. David has a particular interest in developing links with international Shire Horse Societies and we are looking forward to meeting him.



Subscribe to the WORLD'S Foremost Heavy Horse Publication!

Each issue of The Journal is packed with information, news, photography, history & even a little whimsy — all bearing on the heavy horse trade.

With over 20,000 subscribers, it is the most widely read publication devoted exclusively to the subject in the world.

You'll also find the largest conglomeration of advertising pertaining to draft horses, mules and related products and services.

Show Results * Sale Reports * News * Current Trends * History Profiles * Advice * Humor * And MORE!

— **Subscription Rates (U.S. FUNDS ONLY)** —

4X a year!
200+ pages
each issue!

Australia: 1 year - \$40 • 2 years - \$72

Two recent back issues, mailed immediately:
Australia: \$26 (\$15 + \$11 Priority Shipping)

Give a gift
subscription!

The Draft Horse Journal

Dept. SHSA, P.O. Box 670 • Waverly, Iowa 50677 U.S.A.
Ph: (319) 352-4046
E-mail: subscriptions@drafthorsejournal.com
WWW.DRAFHORSEJOURNAL.COM

DISCOVER
MasterCard
VISA

SINCE 1964

Our beautiful horses...

A Tribute to the Great Horse

By Maysel Cross

*Years have rolled on and our pioneers are gone
Though their lives are remembered in verse and in
song.
We read of their hardships, how they lived and they
died
With that finest of breeds, The Great Horse, by their
side.*

*They pulled the wool wagons from stations outback,
Across featureless land, and the gibber strewn track.
When rain tumbled down on the rich black soil plains
The teams of great horses were in mud to their
chains.*

*They carted the produce, wheat cotton and grain
In all sorts of weather, through snow drought and
rain.
Their coats wet with lather their wickers light reined
With great muscles rippling, at the traces they
strained.*

*They scooped out the dams on the long cattle routes
That stockmen still use in this country's harsh
droughts.
In harness and saddle they settled this land,
And cleared the wild bush where townships now
stand.*

*The teamsters knew each horse by nature and name,
The Punches and Nuggets, not one was the same.
Horses of Clydesdale, Lanrshire's name of old,
From Scotland, home of the brave and the bold.*

*From Lincoln, Leicester, Stafford and Derby they came
Great war horses of England, The Shire of fame.
The Percherons, The Suffolks to name just a few
Left their homes in far countries for a land that was
new.*

*In feats of endurance they rank with the best,
For patience and courage they pass every test.
Majestic of build with an elegant air
Noble and docile, there is none to compare.*

*We name them with honour these Great Horses of
ours,
They made Australia a nation in their wagons and
ploughs.
Our debt to this breed goes back through the ages,
May their deeds be recorded in history's gold pages.*



Above - Brook and Colleen Carrington and Ian Scarborough at Hawkesbury Show
Left - Gelding class at Sydney Royal 2010.
Photos courtesy of Grey Horse Photography

Collars & Harness Made to Order

Asterisk Horse-collars & Harness manufactures and repairs all types of collars and harness on the premises in the traditional Australian style.

With over 25 years experience making and repairing long-straw collars, and all types of harness from Pony through to Dray-size single-horse harness, and Pair/Team harness (to Work, Dress or Show Standard), we guarantee to supply you with a product of the *highest quality*.

All components of both collars and harness are brand new, including hames and plough chains.

For enquiries, please contact:

Mark Porter

6 Thomas Street

Currawarna 2650 NSW Australia

Telephone/Facsimile: (02) 6929 1088

Email: porter@asteriskhorsecollars.com.au

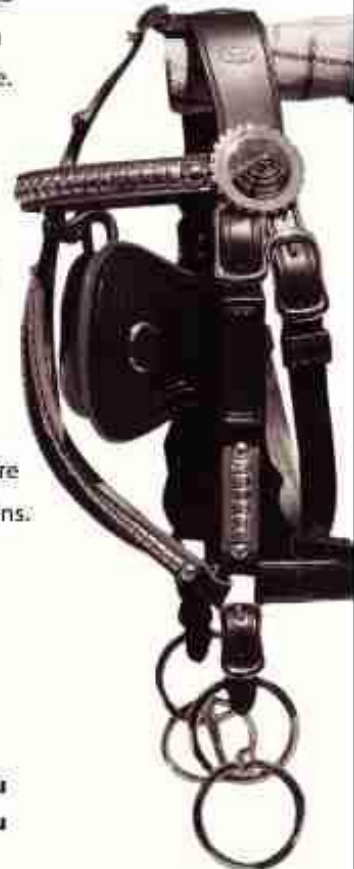
Website: www.asteriskhorsecollars.com.au

ASTERISK®

ABN 74 579 477 108

HORSE-COLLARS & HARNESS

*"The Brand * of Distinction"*



Horses Read Human Body Cues, Researchers Say

by: Christa Lesté-Lasserre

Do you ever feel like your horse might be watching your every move? He very well might be, according to a new behaviour study by British scientists. Their research indicates that horses are highly sensitive to the attention we attribute to them, including our gaze.

In a series of tests involving 36 horses and ponies aged 10 months to 38 years, two humans stood motionless in a paddock, each in a different position that showed more or less attention to the horse. Nearly 80% of the horses chose to walk toward the person that showed the most attention in the three primary tests, said Leanne Proops, PhD, researcher at the Centre for Mammal Vocal Communication Research at the University of Sussex in Brighton and primary author of the study.

During these tests, the animals were to distinguish between a person standing facing the horse or with his or her back to the horse; between two people standing facing the horse but one with the head turned to the side and the other with the head facing forward;

and between two people facing the horse with their full bodies and heads but one with the eyes closed and one with the eyes open.

In a fourth, "mixed cue" test, one person stood sideways but with his head turned toward the horse, whereas the other stood with her body forward and her face turned to the side. Although 60% of the horses in this last test chose the person with the face forward, the results were not considered significant enough to be conclusive on the mixed cue.

In all tests, the testers maintained neutral facial expressions. Horses were not rewarded for choosing correctly, in order to prevent any learning during the study, Proops said. (However, commercial horse treats were given between tests in order to maintain the motivation of the horses.) Interestingly, there were no significant differences in responses among horses from a private riding stable and those in a refuge, which she said suggests that the horse's prior experience with humans has little effect on their attention to human cues.

Another interesting result of the study was that frequently when the horses chose the inattentive person, they would walk into that person's field of vision and made efforts to gain his or her attention, Proops said.

"These results show how sensitive horses are to very subtle body cues when interacting with humans, in the same way that they are sensitive to tiny changes in posture and muscle tone in other horses," Proops said. "Knowing that you are communicating with your horse subconsciously in every move you make can only lead to an improved relationship with him."

Article courtesy of TheHorse.com



THE CLYDESDALE
INTERNATIONAL
SHIRES Today
A Quarterly
Magazine

Report, colour photographs & full results of
2009 NATIONAL SHIRE HORSE SHOW
to be specially featured in Summer Issue (No. 61)
PUBLISHED BY SHOW PHOTOGRAPHER JOHN ZAWADZKI
FOR SUBSCRIPTION FORM: Tel. 01555 893616
EMAIL: clydehorses@yahoo.co.uk
or See JZ at Peterborough, Fri 13th - Sun 15th March

Catching Your Horse: Eye Contact Might Not Matter

by: Scarlett Springate

According to a University of Pennsylvania study, whether or not you make eye contact with your horse doesn't necessarily influence how successful you'll be in catching him in an open pasture.

Experienced horse handlers and educators have encouraged owners to use or not use eye contact while catching horses for different reasons. Some have taught that direct eye contact helps assert dominance or encourage trust, while others have argued that horses interpret eye contact as stalking behavior from a predator.

According to Sue McDonnell, MS, PhD, Certified AAB, the founder and head of the Equine Behavior Program at the University of Pennsylvania's school of veterinary medicine, "The question came up when a student had difficulty catching one of the school's mares, and she said it wasn't her fault because she didn't make eye contact." McDonnell later found that although the question is an important one, the effects of eye contact had never been studied in horses.

In the study, the investigator approached 104 horses and ponies owned by the University of Pennsylvania in open pastures while either making direct eye contact or avoiding it entirely. The test subjects came

from two different groups--74 were semiferal, rarely handled Shetland-type ponies, while the remaining 30 were horses frequently used for research and teaching at the university. The ponies were then retested with the opposite strategy.

There were no differences between the animals in either group or between animals of different sexes or ages. Among the ponies, all but seven were consistently caught or not caught.

While eye contact appeared to play no role in this study, the investigator did find that older horses were more easily caught than younger horses.

McDonnell says more research needs to be done before making any conclusions. "That's what research does--it leads you to the next question. We're just starting to look at this issue."

The study, "Equal Outcomes with and without Human-to-Horse Eye Contact When Catching Horses and Ponies in an Open Pasture," was published in the May 2008 Journal of Equine Veterinary Science. Authors were Verrill, BS, and; McDonnell, MS, PhD. The study was done as a student summer project with the help of the Dorothy Russell Havemeyer Foundation.

Article courtesy of TheHorse.com

WESLEY STEWART FARRIER SERVICES

USA Trained Dip-Horseshoeing

Specialising in performance horses and hoof problems

Also draught and heavy horses

www.wes-the-farrier.com

0412 289 411

Areas Covered:

*Southern Highlands, ACT, Goulburn, Bungendore, Kangaroo Valley, Nowra
and their surrounding vicinities*

Show off your Shires

Ed: I thought I would add in this new section specific to showing - it will feature results, photos and upcoming events. Please send me photos of your horses at shows and let me know of any upcoming events that cater for Shire horses.

Deloraine Show, Tasmania



*Viewfield Gina – Champion Shire
With owner Stephanie Clark*



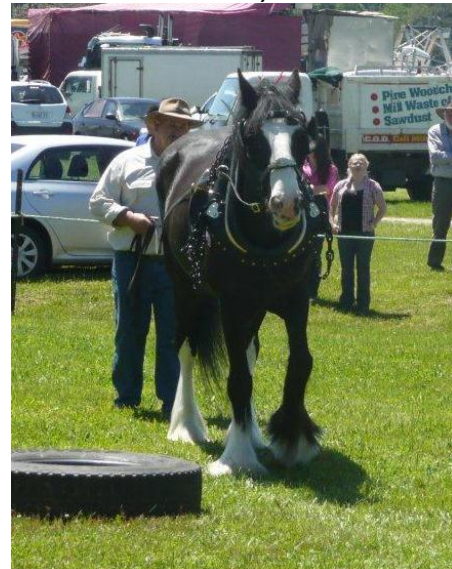
Viewfield Gina



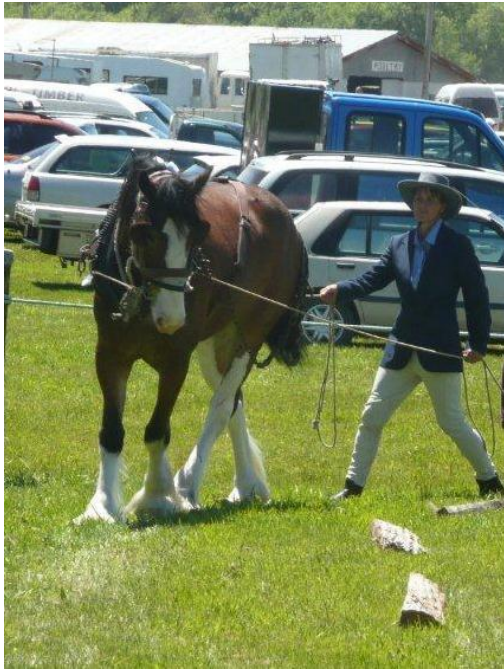
*Mandalay Realm Magentine (known as Foxy)
Champion Male Shire - owned by Jo Jetson*



*Viewfield Kathryn – 1st place Ridden Heavy Horse
Owned and ridden by Deb Buckland*



Foxy and Jo Jetson in the Ground Driven



Deb Buckland and Viewfield Kathryn - 2nd place in the Ground Driven



Broken Bridge Marrakai Champaign – equal 1st in the Ground Driven with owner Deb Buckland

Australian Draught Horse

Sydney & Southern District Branch

Heavy Horse Fun Weekend

For Percheron, Draught, Drum, Shire, Sport Horse, Cob, Clydesdale and any other heavy horse.

Lots of Junior Classes, Led, Working, Ridden & Driver Classes
Something for everyone.

Special trophy and prize for most successful exhibitor

COMPETITIONS
ENTERTAINMENT
THE DRAUGHT
HORSE CHALLENGE
MARKET STALLS



Want your horse classified?
Classifiers available Saturday 15th—
Paperwork must be in by 22nd December

BE AT THE LUDDENHAM SHOWGROUND
15TH & 16TH JANUARY 2011

Camp Sites
Available
\$10.00 per night—
Bookings Required

Come and see 21st century
HORSE POWER and have a
FUN WEEKEND

For More
Information
Ring Nic
0432474000

Shows with classes for Shires

Show	State	Date	Type
Melbourne Summer Royal <i>entries closed</i>	Vic	22/01/2011	Shire specific
Kaima	NSW	29/01/2011	Shire specific
Berry <i>entries close 7/1</i>	NSW	5/02/2011	Draught
Nowra	NSW	12/02/2011	Draught
Crookwell	NSW	12/02/2011	Draught
Kangaroo Valley	NSW	19/02/2011	Draught
Canberra Royal <i>entries closed</i>	ACT	26/02/2011	Shire specific
Mudgee	NSW	5/03/2011	Draught
Camden	NSW	9/04/2011	Shire specific
Sydney Royal <i>entries closed</i>	NSW	17/04/2011	Shire specific
Hawkesbury <i>entries close April</i>	NSW	14/05/2011	Shire specific

Please contact ine_kuiper@hotmail.com to add shows to this list.

Show tip – if you are planning on showing this summer, now is the time to start preparing your horse. Assess their feather, feet, weight and manners and start working on any trouble spots now so they are sorted out by the time you want to go to a show.

Service Providers and Sponsors

Equine Supplies (02) 9688 3220

Weddings - Ware's Livery Stables 02 9679 1255

Cedars Cottages- Secluded self contained cottages for your weekend away with the Shire Horses. Contact Helene Scarf 0412 400 886.

Retford Equine Veterinary Bowral Clinic: Vet Karim Kooros experienced with heavy horses. Ph: 02 48611166 Fax: 02 48621740 email ret.vet@bigpond.net.au

Superior Harness Co: Unbreakable heavy horse sized halters. Fully guaranteed for 12 months.

www.superiorharness.com.au

Ph: 02 9621 4203 Mob: 0407 202 659

Camden Signs at Narellan NSW Ph: 02:46461819 Banners and Signs

Regency Lawyers: For quality legal services. Contact Jack Eid B.Ec LL.BLL.M. PO Box 544 Granville. Phone: 02 9682 1566 email: jack@regencyservices.com.au.

Internet & Telecommunications Australia

ITA is proud to work with the SHSA and offers special rates to members. Services include design, development, and implementation of Web Sites and Systems, Programming, System Integration, Web and Email Hosting, Firewalls and Network Design.

Contact Andrew: 07 5599-4463 or andrewg@ita.com.au

Shire Horse greeting cards



\$3.00 each or pack of ten \$25.00

Contact Christine Hill (artist) 02 4267 2549 hillsco@tpg.com.au

HEAVY HORSE WORLD

THE UK MAGAZINE DEVOTED TO DRAUGHT HORSES

Annual Subscription

UK	£20.00
Europe	£22.00
Rest of World	£24.00

EVERYTHING YOU WANT TO KNOW ABOUT HEAVY HORSES IN THE UK AND WORLDWIDE

SHIRE • CLYDESDALE • SUFFOLK • BRITISH PERCHERON

- TRAINING TIPS • CARE & MANAGEMENT
- WORKING & SHOWING • FREE EVENTS LIST!
- 68 PAGES PACKED WITH NEWS & FEATURES
- GLORIOUS COLOUR PHOTOGRAPHS
- PUBLISHED SINCE 1987 & READ IN 30 COUNTRIES

**NOW
IN FULL
COLOUR!**

Heavy Horse World, Lindford Cottage, Church Lane
Cocking, Midhurst, West Sussex GU29 0HW UK
Tel/Fax: +44 (0)1730 812419 • Email: heavyhorse@mistral.co.uk
www.heavyhorseworld.co.uk

Committee Contact Details

PRESIDENT - Helene Scarf

'THE CEDARS'
Bunkers Hill Rd
Barrengarry
Kangaroo Valley NSW 2577
Ph: 0412 400 886
scarf@bigpond.com

SECRETARY - Helen Kuiper

'INGLESIDE'
245 Bridge St
Thirlmere NSW 2572
Ph: 02 4681 8537
Mb: 0428 424 478
hkuiper@bigpond.net.au

COMMITTEE/REGISTRAR – Deb Buckland

132 Stewarts Road
Winkleigh, TAS 7275
Ph: 03 6396 3213
deb.buckland@bigpond.com

TREASURER - Darren Somerville

Ph: 02 4355 0890
Mb: 0417021604
darren.somerville@gmail.com

VICE PRESIDENT - Anne Coull

Ph: 02 4355 0890

COMMITTEE/PUBLICITY - Ineke Kuiper

Ph: 02 4681 8537
Email: ine_kuiper@hotmail.com

COMMITTEE – Michelle Miles

Ph: 08 9732207
oldworldhorses@hotmail.com

COMMITTEE - Liz Williams

Ph: 02 72746701
romeoristorante@bigpond.com

COMMITTEE - Karen Mitchell

Ph: 02 42717790
cordeauxcottage@optusnet.com.au

COMMITTEE - Amanda Taylor

Mb: 0403184990
amanda_taylor@southernphone.com.au

Stud listings on SHSA website

The SHSA website gets a lot of traffic and many inquiries from people interested in buying Shires, looking for stallions or meeting other Shire Horse enthusiasts.

The Stud pages hold about five photos or images, a stud logo, a full A4 page of text and your contact details. Each stud has its own click through link for enquires, going directly to your email address.

The annual \$200 fee (plus GST) covers all set up costs, minor changes throughout the year, and an annual revamp of your content and images if requested.

If you already have a website, for \$75 you can have a paragraph and a link through to a Shire related site.

To place your page, contact Andrew Gunter, 07 5599-4463 or andrewg@ita.com.au

SHSA Newsletter Advertising

Full page x 4 issues - \$100

½ page x 4 issues - \$50

¼ page x 4 issues - \$25

The Classifieds and Service listings are free to all SHSA members and approved friends.

Ed: Membership. SHSA welcomes new members for both full and associate membership. Please go to www.shirehorsesociety.com.au and download an application form if you know anyone who wants to join.